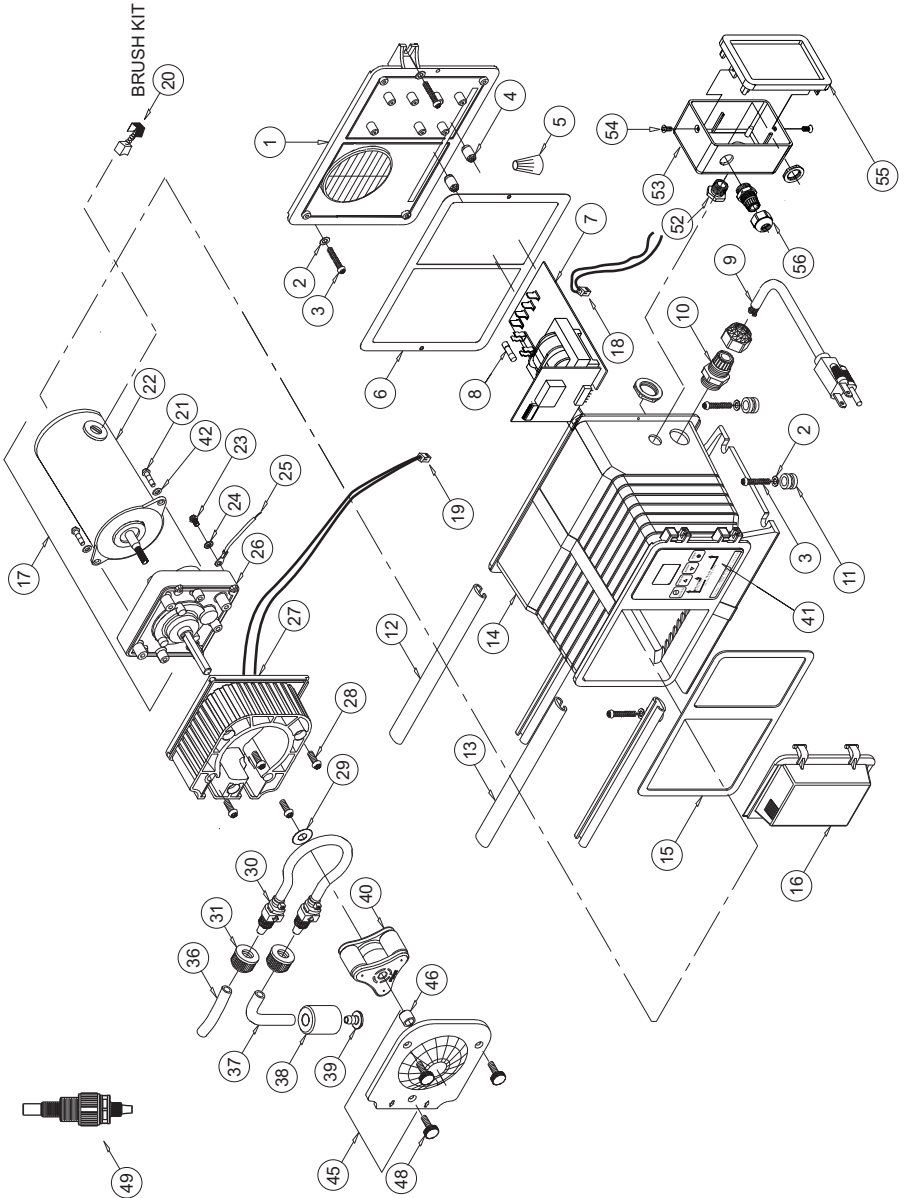


REPLACEMENT PARTS DRAWING



## REPLACEMENT PARTS LIST

Item	Part No	Description	Qty	Item	Part No	Description	Qty
1	71000-489	Enclosure Back Plate With Gasket, Valox	1	25	90010-222	Wire, Motor ground, Digital Timers, Green	1
2	90011-094	Washer, Mounting, #10 Stainless	2	26	A-008-1	Gearbox, 14 Rpm	1
3	90011-091	Mounting Screw, #10 X 1.0" Phillips Steel	4		A-008-2	Gearbox, 30 Rpm	1
4	76001-001	Tubing Spacer A-100N digital	2		A-008-3	Gearbox, 45 Rpm	1
5	90010-036	Wire Nut, Blue	1		A-008-4	Gearbox, 60 Rpm	1
6	90006-580	Gasket, Enclosure Back Plate	1		A-008-5	Gearbox, 125 Rpm	1
7	A-023N-V-115	Circuit board A-100NV 115V	1	27	71000-488	Pumphead, A-100N w/TFD sensors	1
	A-023N-V-230	Circuit board A-100NV 220V/230V	1	28	C-324N	Screw, Pumphead, 10-32 X .50 Phil Pan Black	4
8	90010-235	Fuse, A-100NV Circuit Board, 1A, 250VAC	1	29	A-031	Spacer, Rotor	1
9	71000-175	Power Cord, 115v60hz, Digital Models	1	30	A-002N-4T	Pump Tube, .25 O.D., Compression Barb Type	1
	71000-176	Power Cord, 220v50hz, Digital Models	1		A-002N-6T	Pump Tube, .37 O.D., Compression Barb Type	1
	71000-177	Power Cord, 230v60hz, Digital Models	1		A-002N-7T	Pump Tube, .43 O.D., Compression Barb Type	1
10	70000-589	Cord Inlet Bushing	1	31	C-330-6	Nut, Tube Compression Type, .37 O.D. Tubing	2
11	90003-559	Mounting Feet, Rubber	4	36	C-335-6	Tubing, Outlet, .37 O.D. X 5ft, Polyethylene	1
12	76001-000	Slide Clamp, Enclosure Rear	1	37	C-334-6	Tubing, Inlet, .37 O.D. X 5ft, Clear PVC	1
13	76000-999	Slide Clamp, Enclosure Front	1	38	C-346	Weight, Inlet Tubing, Ceramic	1
14	76001-253	Enclosure A-100NV	1	39	C-342-2	Strainer, Inlet Tube, Polypropylene	1
15	90006-579	Gasket, Enclosure Front	1	40	71000-159	Roller Assembly -4, -6 tubes (white rollers)	1
16	90002-191	Door, Electronic Controls Cover	1		71000-350	Roller Assembly -7 tubes (black rollers)	1
17	70002-250	Gearmotor, 14 Rpm, 24V DC	1	41	90012-245	Label, A-100NV front panel controls	1
	70002-251	Gearmotor, 30 Rpm, 24V DC	1	42	90011-074	Washer, #8 splitlock	2
	70002-252	Gearmotor, 45 Rpm, 24V DC	1	45	71000-156	Cover, Pumphead With Sleeve Bearing	1
	70002-253	Gearmotor, 60 Rpm, 24V DC	1	46	76001-003	Bearing, Sleeve, Pumphead Cover	1
	70002-254	Gearmotor, 125 Rpm, 24V DC	1	48	90011-160	Screw, Pumphead Cover, 8-32 X .62 Cap	3
18	90010-246	Wire set w/plug, Alarm relay	1	49	A-014N-6A	InjValve Assy, .5-.25 MPT X .37OD Tube	1
19	90010-245	Wire set w/plug, TFD sensor	1	52	90007-515	Bushing, Junction Box Connector, Alum.	1
N/s	90010-247	Wire set w/plug, input signals	1	53	76001-254	Junction Box A-100NV	1
20	C-1814N-4	Motor Brush kit (2 ea), 24V DC	1	54	90011-129	Screw, Cover, 6-32 X .25 Phil Pan SS Black	2
21	90011-023	Screw, Motor, 8-32 x .50	2	55	71000-133	Cover, Junction Box with Gasket and Label	1
22	90010-244	Motor, 24V DC	1	56	90008-199	Connector Liquid-tight	1
23	90011-024	Screw, Green Ground, 8-32 x .25	1				
24	90011-078	Washer, Ground Screw, #8 Star	1				